

Stabilized Remote Head 360 EVO - Sets



Configuration Overview | 8.4.0 / 2027.08

Stabilized Remote Head EVO 360



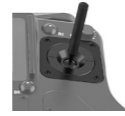
360 EVO Basic Set, No Joystick, KK.0050103

Full-circle rotation on the roll axis. 360-degree rotation on the roll axis, revolving around the optical center of the lens, enables even more creativity for films, dramas, commercials, and music videos. Exceptionally dynamic roll-axis shots can be achieved by mounting the head to a crane, for example, or a cable cam above a live broadcast event.

includes:
 K2.0049722 1x 360 EVO Stabilized Remote Head
 K2.0049724 1x RCP-2 EVO Remote Control Panel
 K2.0041201 1x Stabilizer Adapter Mount SAM-Zero
 K2.0039443 1x Cam Pwr Gen.2, ALEXA 35, Mini, AMIRA, 24 V, 8-pin
 K2.0039448 1x Cam Pwr Gen.2, 4-pin XLR, 12 V
 K2.0041984 1x 12G HD SDI BNC Cable, 0,63m/25in
 K2.0019298 1x SRH Mitchell Mount, Metric
 K2.0019302 1x SRH FS CAN Bus Cable, 10m/32.8ft
 K2.0019306 1x SRH High-Capacity Battery Power Cable, 12V/24V, 0.5m/1.64ft
 K2.0021427 1x SRH High-Capacity Battery Power Cable 24V, 3-pin XLR, 10m/33ft
 K2.0021428 1x SRH High-Capacity Battery Power Cable 12V, 4-pin XLR, 10m/33ft
 K2.0038756 1x Wrench for SRH Castle Nut, Mitchell Mount
 K2.0037206 2x 3/8in-16 Camera Screw
 K2.0037205 1x 90° angled Hex Key 4mm
 K2.0037207 1x Zip bag for tools
 K2.0042681 1x TRH-2 Ring Main Cable, Long, 0,75m/29.5in
 K2.0049726 1x Case 360 EVO Stabilized Remote Head

NOTE
 The 360 EVO BASIC set does NOT include a joystick!
 To complete the initial order, at least one of the mandatory joystick sets must be ordered.
 Standard Joystick for SRH Remote Control Panel, RCP-2 (K2.0039880) Microforce Joystick for SRH Remote Control Panel, RCP-2 (K2.0039882) Broadcast Joystick for SRH Remote Control Panel, RCP-2 (K2.0039881)

Mandatory Joysticks for RCP-2



Standard Joystick for SRH Remote Control Panel, K2.0039880



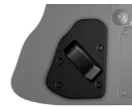
Broadcast Joystick for SRH Remote Control Panel, K2.0039881



Microforce Joystick for SRH Remote Control Panel, K2.0039882



Focus Knob for SRH Remote Control Panel, K2.0019291



Zoom Rocker for SRH Remote Control Panel, K2.0019292



Additional Joystick for SRH Remote Control Panel, left side, K2.0019290



Focus / Zoom Set for SRH Remote Control Panel, K0.0019595



SRH Tripod Adapter Plate for SRH Remote Control, K2.0019293

Radio Sets



ERM-2400 2.4 GHz RXD-TXD Pro Set, SRH, KK.0040049



ERM-2400 Ext 2.4 GHz RXD-TXD Pro Set LCS, KK.0040048



ERM-900 MHz RXD-TXD Pro Set, SRH, KK.0040050

For more details see Configuration Overview 8.6.0 & 8.6.1

Optional Controllers



DEH-2 Pro Set, Right Zoom Rocker Master Grip, OCU-1, K0.0048723

Includes:
 K2.0044672 1x DEH-2, Digital Encoder Head 2
 K2.0020002 1x Operator Control Unit OCU-1 Basic Set
 K2.0020003 1x OCU-1 Rosette Bracket
 K2.0009493 1x Master Grip Right Rocker MRR-1
 K2.0048586 2x Cartoni special pan bar ø20mm
 K2.0012919 2x Handgrip Pan Bar Adapter 20mm
 K2.0006752 2x Cable LBUS - LBUS (0.8m/2.6ft)
 K2.0006753 2x Cable LBUS - LBUS (1.5m/5ft)

DEH-2 Pro Set, Left Zoom Rocker Master Grip, OCU-1, K0.0048724

Includes:
 K2.0044672 1x DEH-2, Digital Encoder Head 2
 K2.0020002 1x Operator Control Unit OCU-1 Basic Set
 K2.0020003 1x OCU-1 Rosette Bracket
 K2.0009490 1x Master Grip Left Rocker MLR-1
 K2.0048586 2x Cartoni special pan bar ø20mm
 K2.0012919 2x Handgrip Pan Bar Adapter 20mm
 K2.0006752 2x Cable LBUS - LBUS (0.8m/2.6ft)
 K2.0006753 2x Cable LBUS - LBUS (1.5m/5ft)



DEH-1 Digital Encoder Head, K2.0022594



DEH-2, Digital Encoder Head 2, K2.0044672

Bracket for Controller



SSB-7, Stabilizer System Bracket 7, DEH-2 Set, KK.0049407

Special Counterweight Bracket for the DEH-2
 includes:
 K2.0048281 1x Stabilizer System Bracket SSB-7
 K2.0043811 2x Single Support Rod 76mm, 3in, ø19mm
 K2.0048587 2x Cartoni Counterweights Rod ø22mm, 2x0,5kg

Recommended accessories:
 BMS-3, Pro Set, V-Mount (KK.0049408)
 BMS-3, Pro Set, Gold-Mount (KK.0049409)
 Multicam Monitor bundle VMM-1 & MYS-1 (K0.0039106)

EJS-1, EJW-1, Controller Set, KK.0051502

includes:
 K2.0049229 1x EJS-1, External Joystick, Broadcast
 K2.0049230 1x EJW-1, External Jog-Wheels
 K2.0006750 2x Cable LBUS - LBUS (0.3m/1ft)
 K2.0042837 2x CSS Clamp Bridge 52, 19mm
 K2.0047854 1x NATO Accessory Rail NAR-60
 K2.0049419 1x NATO Rail Clamp NRC-3



EJW-1, Controller Set, KK.0051102

includes:
 K2.0049230 1x EJW-1, External Jog-Wheels
 K2.0006750 1x Cable LBUS - LBUS (0.3m/1ft)
 K2.0042837 1x CSS Clamp Bridge 52, 19mm
 K2.0047854 1x NATO Accessory Rail NAR-60
 K2.0049419 1x NATO Rail Clamp NRC-3



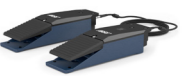
DRW-1 Digital Remote Wheel, Single Wheel Set, KK.0051504

includes:
 K2.0051132 1x DRW-1 Mounting Base 2
 KK.0021211 1x DRW-1 Digital Remote Wheel, Third Wheel Set
 K2.0042837 1x CSS Clamp Bridge 52, 19mm



DEP-1, Digital Encoder Pedal, Pro Set, K0.0039160

includes:
 K2.0039147 1x DEP-1, Host Pedal
 K2.0039149 1x DEP-1, Client Pedal
 K2.0001637 1x Cable RS - RS/PWR IN (0.5m/1.6ft)



RCP-3, Controller, 19mm Mounting Set, KK.0051503

includes:
 K2.0049453 1x Mitchell Wedge Lock Set
 K2.0050433 1x CSS Mitchell Base Plate
 K2.0049885 2x CCB-2, CSS Clamp Bridge-2, 52, 19mm
 K2.0040791 1x Support Rods 430mm, 16.9in, ø19mm

