



# **GUI Version 3.1.0.2 MAXIMA and TRINITY**

**USER MANUAL**

**Date 29. Jan. 2018**

## Imprint

Copyright © 2018 Arnold & Richter Cine Technik GmbH & Co. Betriebs KG.  
All rights reserved.

No parts of this document may be reproduced without prior written consent of Arnold & Richter Cine Technik GmbH & Co. Betriebs KG. Specifications are subject to change without notice. Errors, omissions, and modifications excepted. ARRI, ALEXA, AMIRA, LDS and LENS DATA SYSTEM are trademarks or registered trademarks of Arnold & Richter Cine Technik GmbH & Co. Betriebs KG. All other brands or products are trademarks or registered trademarks of their respective holders and should be treated as such. Original version.

### For further assistance:

Arnold & Richter Cine Technik GmbH & Co. Betriebs KG  
Türkenstr. 89  
80799 München  
Germany  
[www.arri.com](http://www.arri.com)

## Document revision history

Version	Order Coder	Release	Date
3.1.0.2	K4.0019240	F06606	29. Jan 2018
3.1.0.1			01. Oct 2017

## Scope

The third generation of the MAXIMA and TRINITY graphic user interface, the so called **GUI** can be used with all existing MAXIMA and TRINITY units. The redesigned graphic user interface is focusing on easy use of the software and a fast setup of the MAXIMA and TRINITY.

## Disclaimer

Before using the products described in this manual, be sure to read and understand all the respective instructions.

Otherwise the customer must contact ARRI before using the product.

While ARRI endeavors to enhance the quality, reliability and safety of their products, customers agree and acknowledge that the possibility of defects thereof cannot be eliminated entirely. To minimise the risk of damage to property or injury (including death) to persons arising from defects in the products, customers must incorporate sufficient safety measures in their work with the system and heed the stated conditions of use.

ARRI or its subsidiaries do not assume any responsibility for losses incurred due to improper handling or configuration of the TRINITY or other system components.

ARRI assumes no responsibility for any errors that may appear in this document. The information is subject to change without NOTICE.

For product specification changes after this manual was published, refer to the latest published ARRI data sheets or release notes, etc., for the most up-to-date specifications.

Not all products and/or types are available in every country. Please check with an ARRI sales representative for availability and additional information. Neither ARRI nor its subsidiaries assume any liability for infringement of patents, copyrights or other intellectual property rights of third parties by or arising from the use of ARRI products or any other liability arising from the use of such products. No license, express, implied or otherwise, is granted under any patents, copyrights or other intellectual property right of ARRI or others.

ARRI or its subsidiaries expressly exclude any liability, warranty, demand or other obligation for any claim, representation, cause, action, or whatsoever, express or implied, whether in contract or not, including negligence, or incorporated in terms and conditions, whether by statute, law or otherwise. In no event shall ARRI or its subsidiaries be liable for or have a remedy for recovery of any special, direct, indirect, incidental, or consequential damages, including, but not limited to lost profits, lost savings, lost revenues or economic loss of any kind or for any claim by a third party, downtime, goodwill, damage to or replacement of equipment or property, any cost or recovery of any material or goods associated with the assembly or use of our products, or any other damages or injury of the persons and so on or under any other legal theory. In the event that one or all of the foregoing clauses are not allowed by applicable law, the fullest extent permissible clauses by applicable law are validated.

## Table of Contents

1	For your safety	4
2	On-Board Interface	5
3	Default User Presets	6
4	Installing the Software	7
5	Starting the GUI	7
6	Changing from Standard to Advanced Mode	8
7	Connecting the USB Cable	8
8	Connecting the MAXIMA / TRINITY to the PC	9
9	Home Screen	9
10	Motor Power the three payload groups	10
11	Adjusting Motor Power / PID	11
12	Uploading adjustments to the MAXIMA and TRINITY	14
13	Cloning Settings	15
14	Vibrations	16
15	Right Motor Power	16
16	Joystick	17
17	Delay / Deadband	18
18	Endstops	19
19	Follow Mode / Fully Stabilized Mode	22
20	Saving and Loading Profiles	24
21	Troubleshooting	25
22	Pan Lock	26
23	Wheels	27

## 1 For your safety

Before use, please ensure that all users comprehensively read, understand, and follow the instructions in this document.

### Risk levels and alert symbols

Safety warnings, safety alert symbols, and signal words in these instructions indicate different risk levels:

<b>▲ DANGER</b>
<i>Danger</i> indicates an imminent hazardous situation which, if not avoided, <b>will result in</b> death or serious injury.
<b>▲ Warning</b>
<i>WARNING</i> indicates a potentially hazardous situation which, if not avoided, <b>may result in</b> death or serious injury.
<b>▲ CAUTION</b>
<i>CAUTION</i> indicates a potentially hazardous situation which, if not avoided, <b>may result in</b> minor or moderate injury.
<b>NOTICE</b>
<i>NOTE</i> explains practices not related to physical injury. No safety alert symbol appears with this signal word.
<b>NOTE</b>
Provides additional information to clarify or simplify a procedure.

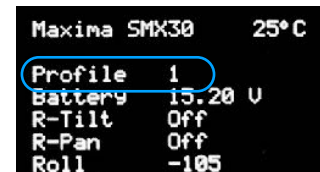
## 2 Controls and adjustments operated directly on the MAXIMA and TRINITY

### 2.1 Changing Profiles

By pressing **MODE** one time, you will recall profile number **ONE**.

By pressing **MODE** twice, you will recall profile number **TWO**.

And so on...



### 2.1 Changing the Joystick Direction

Operated directly on the TRINITY

- Press **OK** until Joystick is displayed
- Press **OK**
- Select: Normal - Inverted - Off by pressing **UP** or **DOWN**
- Press **OK** to confirm your selection

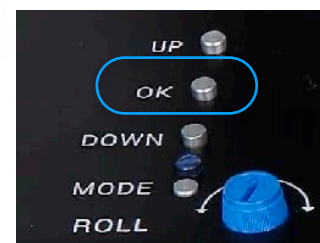


1. Joystick
2. Remote
3. Calibration
4. Remote Pairing
5. Restore
6. Info
7. Exit

### 2.3 Paring the Wireless Remote Control

Operated directly on the TRINITY

- First switch **Off** the Remote Control!
- Press **OK**
- Press Down until you see **Remote Pairing**
- Press **OK**
- Now the MAXIMA will start a **10 sec. count down**.
- After **5 sec.** the MAXIMA will beep.
- Switch **ON** the wireless Remote Control.
- Now the Remote will be paired



1. Joystick
2. Remote
3. Calibration
4. Remote Pairing
5. Restore
6. Info
7. Exit

### 3 Default User Presets

#### 3.1 MAXIMA

The MAXIMA supplied with this five Default User Presets, which are programmed for camera setups up to 10 Kg / 22 lb.

Profile	Motor Power	Tilt	Pan	Feels	Good for
1	45	Follow	Follow	Very direct	Handheld Look
2	45	<i>Fully Stabilized</i>	Follow	Very direct	Handheld Look
3	45	Follow	Follow	Less direct	Easy Rig / running shots
4	45	<i>Fully Stabilized</i>	Follow	Less direct	Easy Rig / running shots
5	45	<i>Fully Stabilized</i>	<i>Fully Stabilized</i>	Very direct	To be used with the wireless control or wheels

#### 3.2 TRINITY

The TRINITY supplied with five Default User Presets, which are programmed for camera setups up to 10 Kg / 22 lb.

Profile	Motor Power	Tilt	Pan	Feels	Good for
1	35	<b>Fully Stabilized</b>	regular		TRINITY moves
2	35	<i>Follow</i>	regular	Very direct	Classic Steadicam™ feel
3	35	Follow	goofy		TRINITY moves
4	35	<i>Fully Stabilized</i>	goofy	Very direct	Classic Steadicam™ feel
5	35	Follow	regular	Very direct	Roll and Tilt is in Follow Mode

#### NOTE

To be able to change any of this adjustment, you need to install the FoMa Control software and you need to read the User Manual GUI.

The manual is available on the USB stick and on the ARRI CSS web page in the download area.

## 4. Installing the GUI / Software

### NOTE

The latest GUI and Windows drivers can be found at the [ARRI CSS web page](#).

The **Control Software, the so called GUI** will only work on a PC with Windows 8 or 10, or a Windows Tablet with Windows 8 or 10, or on a Mac running Parallels.



### NOTE

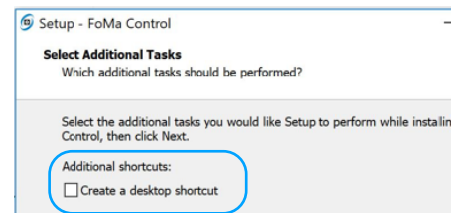
The software does not need a powerful computer.

**⚠ CAUTION**

**Install the USB driver first!**  
Then you can run the FoMa\_Control\_Setup.exe

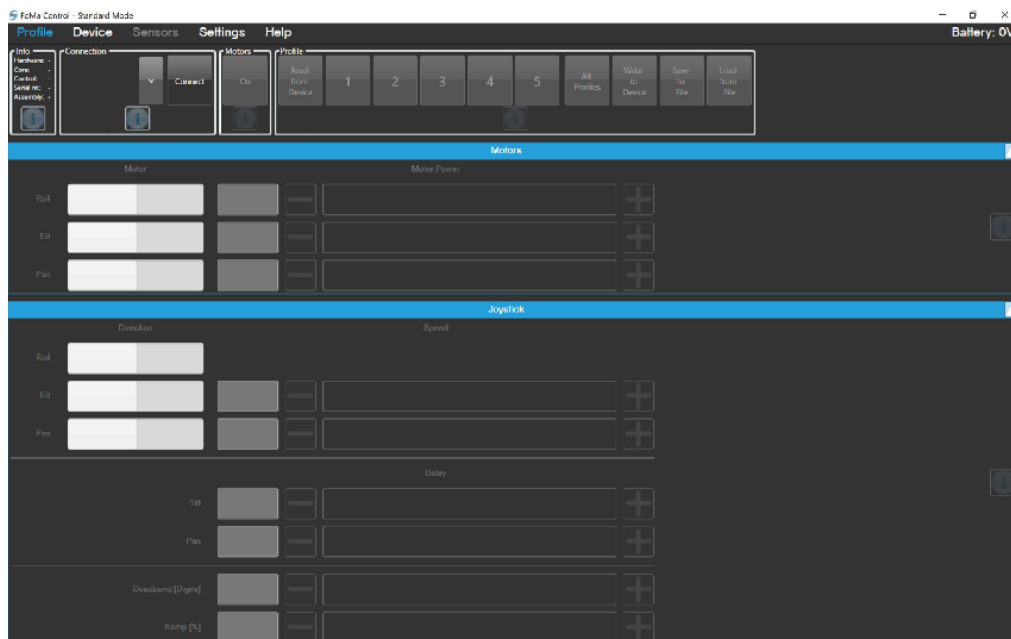
**Check** first if windows is running in **32** or **64 bit** mode.

- Click onto the Windows Logo in the lower left corner
- Right click and navigate toto system, to see if you are running 32 or 64 bit system.
- If you are running a **32 bit system** install the **CP210xVCPInstaller\_x86.exe**.
- If you are running a **64 bit system**, install the **CP210xVCPInstaller\_x64.exe**.
- Then install The FoMa Control Setup V.exe
- **NOTE**  
While installing the software, you can create a desktop shortcut, click in the box.



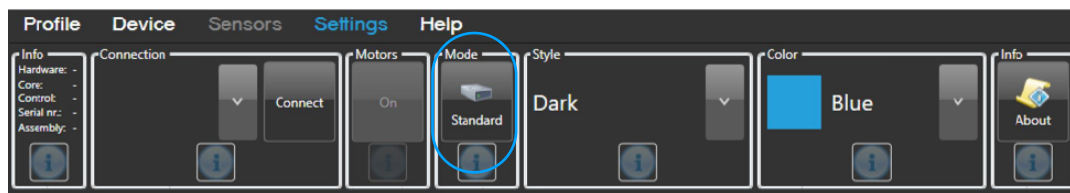
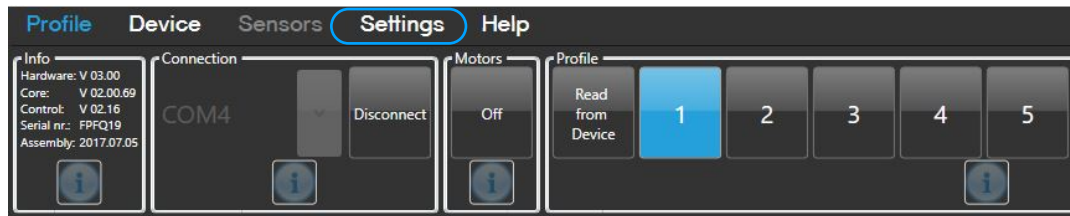
## 5 Starting the GUI / software the first time

This is the first tab you will see after you have launched the FoMa Control program.



## 6 Changing from Standard to Advanced Mode

The GUI normally will start in the standard mode.  
To change the GUI from standard to advanced mode, go to setting.



Click on **Mode** and change between **Standard** and **Advanced** mode.

### NOTE

For the beginning stay in the **Standard** mode.

## 7 Connecting the USB Cable

To connect the MAXIMA / TRINITY to a PC or Tablet computer, a USB cable with a **MINI USB** connector on one end is needed.

Location of the USB sockets

The USB socket on the MAXIMA is located at the right side of the housing.



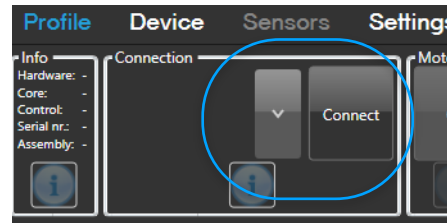
The USB socket of the TRINITY is located on the right side of the base plate.





## 8 Connecting the MAXIMA / TRINITY to the PC

- To start the GUI, double click on the FoMa CONTROL icon located on the desktop.
- Connect the USB cable to the PC / Tablet and the MAXIMA / TRINITY.
- The MAXIMA / TRINITY display will **switch off** for a short moment.
- Wait until the display comes back on again.
- Select the USB port (it will be **COM3** most of the time)
- Press **Connect**
- Now all profiles of the MAXIMA / TRINITY will be **uploaded** into the GUI / software.



### ⚠ CAUTION

While connecting the MAXIMA / TRINITY to the GUI, the motors will be engaged for a short moment. Make sure you hold and secure the camera while the display goes off and comes back again.

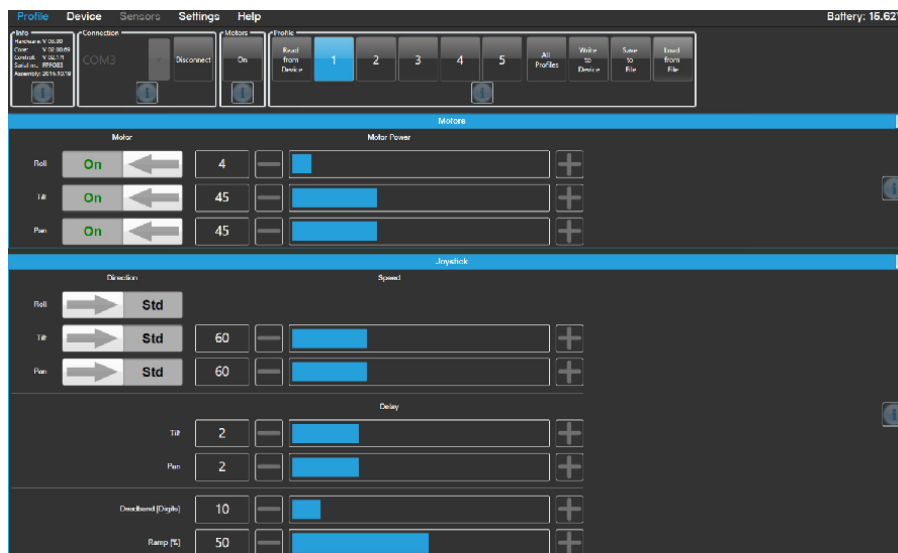
### ⚠ CAUTION

In the unexpected case that the MAXIMA / TRINITY is extremely vibrating right after the connecting process, please switch off the MAXIMA / TRINITY and switch it on again 2 seconds later.



## 9 The Home Screen

You will see this tab after connecting successfully.



## 10 Motor Power and the three payload groups



The fastest way to set up the motor power of the MAXIMA and TRINITY, is to divide the possible cameras setups into three weight groups.

camera setup	up to	Motor Power Tilt &Pan	Roll
Light	10 Kg / 22 lb.	35* / 45** (Default setting)	4
Medium	15 Kg / 33 lb.	80	5
Heavy	30 Kg / 66 lb.	110	6

\* TRINITY / \*\*MAXIMA

### NOTE

The adjustable payload ranges, light, medium and heavy, allow an **offset of 2,5 Kg / 5.5lbs.**

You do not need to be 100% on the spot.

### 10.1 Light camera setups up to 10 Kg / 22 lb.

This ALEXA MINI setup will be within this 10Kg / 22lb. payload range:

It contains:

- ALEXA MINI Body
- ALURA LWZ ZOOM 15.5-45 mm  
K2.47934.0 (m), K2.47935.0 (ft)
- SAM2 Plate K2.0014215
- ARRI Rod Mounting Bracket RMB-3  
K2.0006186
- Support Rods 240 mm (9.4 inch), Ø 19 mm  
K2.66270.0
- cforce Mini (Basic Set) K2.0006355



### NOTE

To get the perfect vertical position for the MINI, please use the SAM-2 Stabilizer Adapter Mount for ALEXA Mini / K2.0014215

### 10.2 Medium camera setups up to 15 Kg / 33 lb.

An **AMIRA** setup with a LWT Zoom and Motors will be within the 15 Kg / 33lb. payload range.

#### NOTE

To get the perfect vertical position for the AMIRA, please use the SAM-3 Stabilizer Adapter Mount for AMIRA / **K2.0014630**



### 10.3 Heavy camera setups up to 30 Kg / 66 lb.

An **Alexa** setup with a Prime Lens and Motors will be at the lower end of the 33 Kg / 33lb. payload range.

#### NOTE

To get the perfect vertical position for the ALEXA, please use the SAM-1 Stabilizer Adapter Mount for ALEXA / **K2.0014022**



## 11 Adjusting the Motor Power (Standard Mode)

To change the motor power to a higher value, you can:

- Click on the + and - buttons
- Place the cursor into the number field and type in the number
- On a tablet you can slide the blue bar with your finger tips

### 11.1 The light setup will look like this:

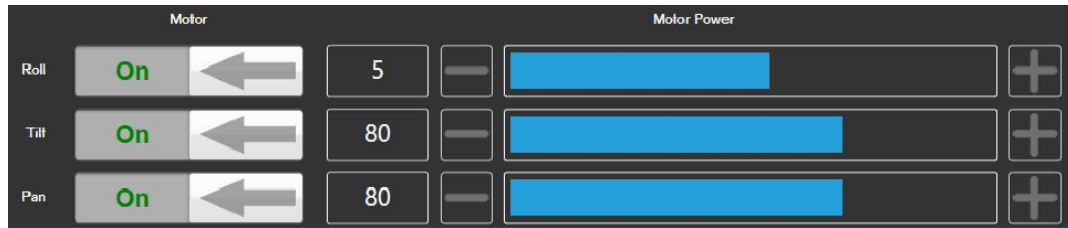


#### NOTE

In the standard mode the GUI shows the most effective motor power range for Tilt and Pan, which goes from 20 to 110.

If higher values than 110 are needed, you need to change into the **Advance Mode**.

### 11.2 The Medium setup will look like this:



### 11.3 The heavy setup will look like this:



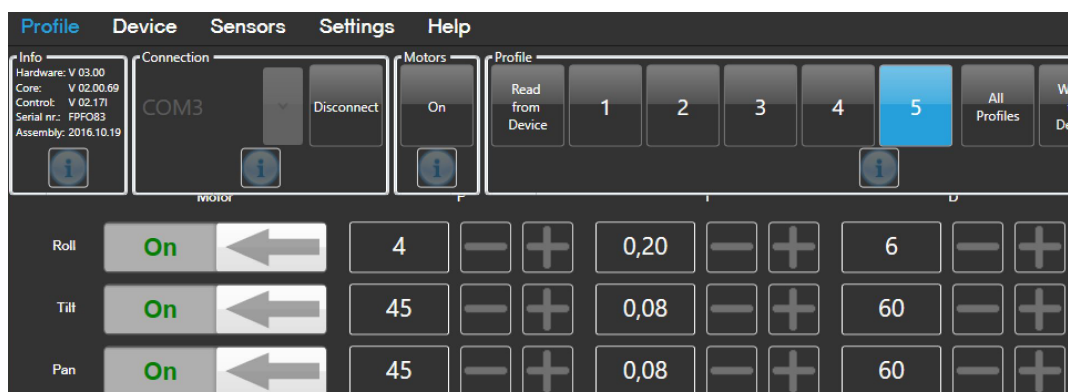
#### NOTE

If you need to fine trim the motor power, changing the values by steps of **five up and down**, will be the best way to find the right motor power adjustment.

### 11.3 Adjusting PID (Advanced Mode)

Proportional – Integral – Derivative controller (PID controller)

In the Advanced Mode, you can adjust the Motor Power more accurate by using the **PID** adjustments.

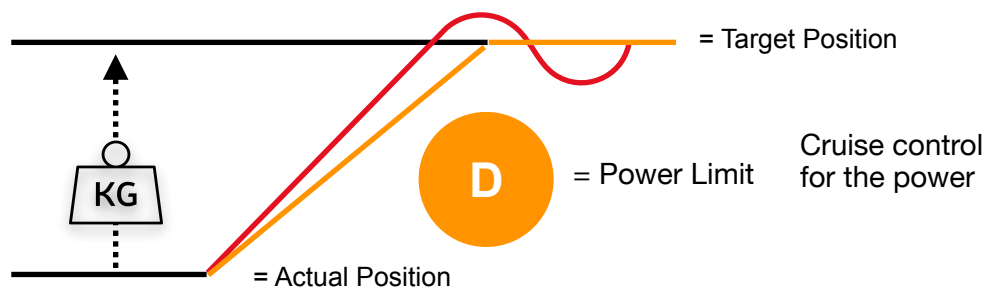
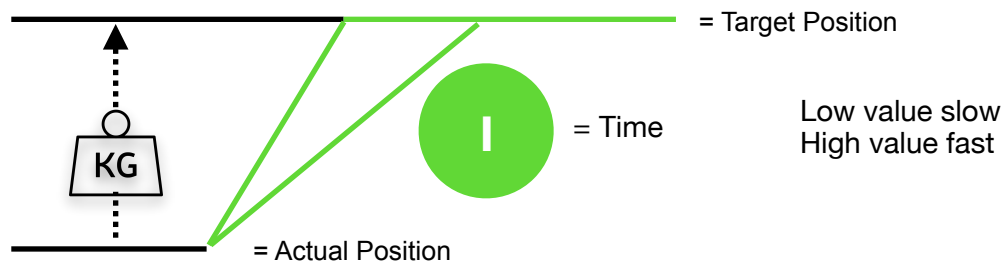
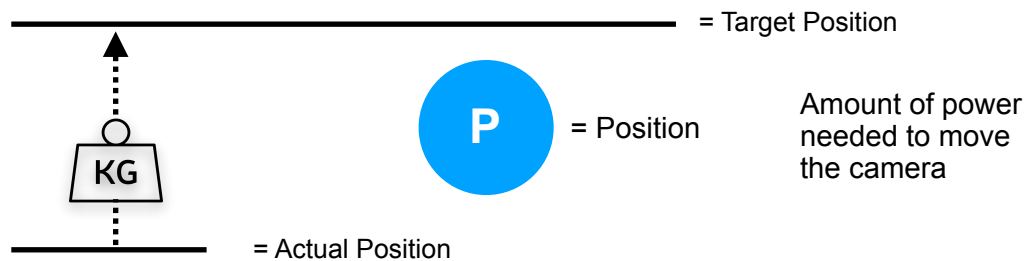


### 11.4. PID Quick Guide

#### NOTE

Start with a solid camera setup

- Set Ramp and Damp to ZERO on the Joystick (Pan & Tilt)
- Physical test the Tilt axis.
- Touch the Tilt axis and try move the camera down and check if the camera slipping. If the tilt axis is slipping, you need to higher **P** for the Pan axis
- Select a point in the set.
- Use the joystick to tilt and stop the head and see if the camera: stops at the selected point or if it is over driving the point 4.3 or if it is bouncing left and right
- If the heads over driving or bouncing, you need to lower the P and D value of the Tilt axis by steps of five.
- Same process for Pan axis



## 12 Uploading adjustments to the MAXIMA and TRINITY

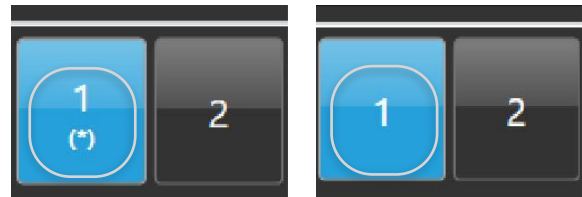
### NOTE

After changing any of the settings, you have to **upload / write** the settings to the MAXIMA and TRINITY.



### Click on Write to Device

The (\*) indicates that there had been changes in the user profile and that these changes have **not** been uploaded to the MAXIMA / TRINITY. After the upload the (\*) will disappear.



### NOTE

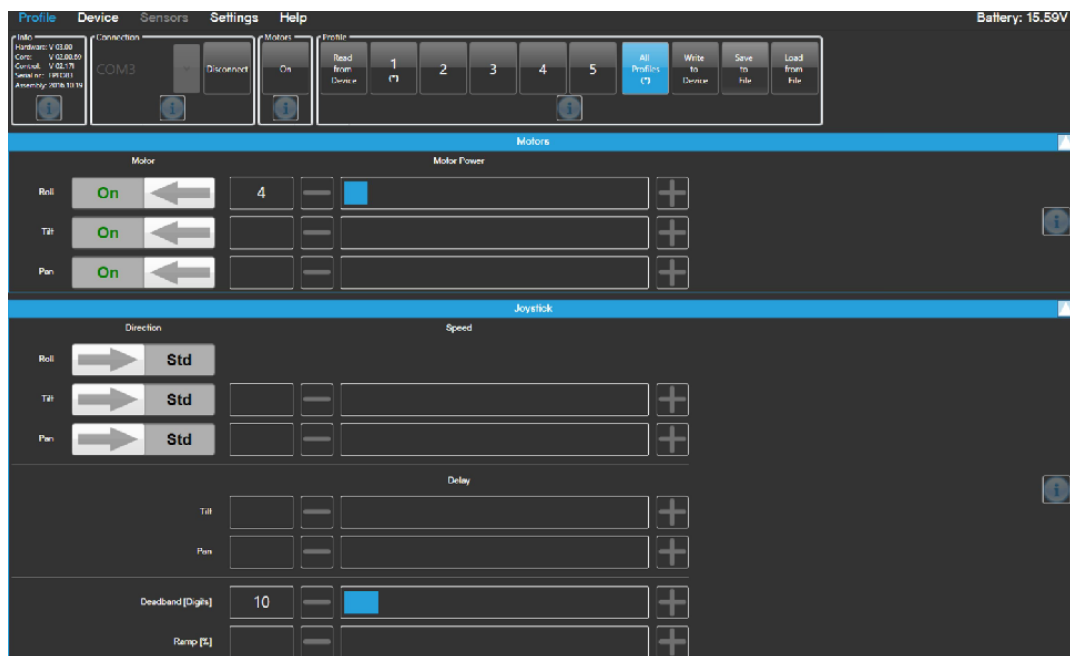
As long you see the (\*) the changes will not be affective.

## 13 Cloning Settings

If you want to have the same motor power adjustments in all five user profiles, click on **All Profiles**.



You will get a new tab in which you can program the motor power and other adjustments like joystick and follow mode for all 5 user profiles.



Repeat step 6.0 for changing the motor power and press **Write to Device** step 7.0.

Now you will have the same motor power adjustments in all five user profiles.



## 14 Why is the MAXIMA / TRINITY vibrating?

### 14.1 Reason 1

Not suitable or loose components.

If the System vibrates, make sure that:

- The dedicated camera dovetail plate is mounted (Sam 1, 2 or 3)
- All screws clamps are fully tighten
- That no carbon fibre or stainless steel 15mm rods are used (aluminum rods are the best)
- That long lenses are supported with the dedicated lens support.
- That the matte box is not loose or causing vibrations.
- That the batteries sitting tight in the battery mount.

### 14.2 Reason 2

If the System still vibrates, lift the MAXIMA up from the table, case or the stand (the TRINITY of the docking stand) to see if the vibrations will stops.

#### NOTE

Gimbals are made for elastic mounts, like humans, spring arms and so on. Stands or tables are too stiff, that is why Gimbals start to vibrate.

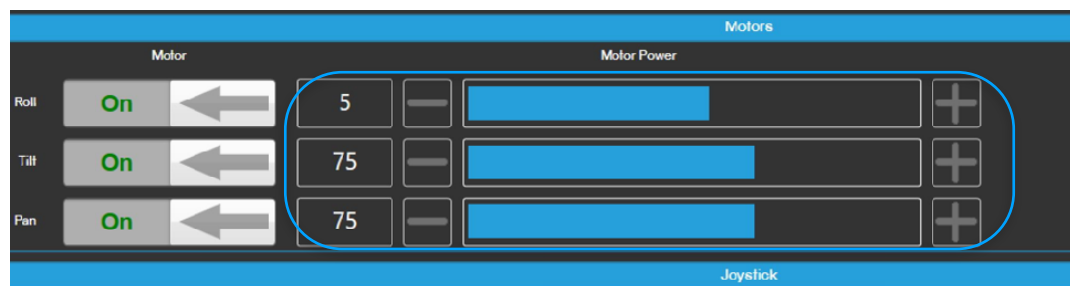
### 14.3 Reason 3

The motor power is too high.

## 15 The right Motor Power

If the system is still vibrating, you will need to adjust the motor power of the Tilt and Pan axis.

Go back to step 6.0 or 7.0 and decrease the motor power value by five steps.



#### NOTE

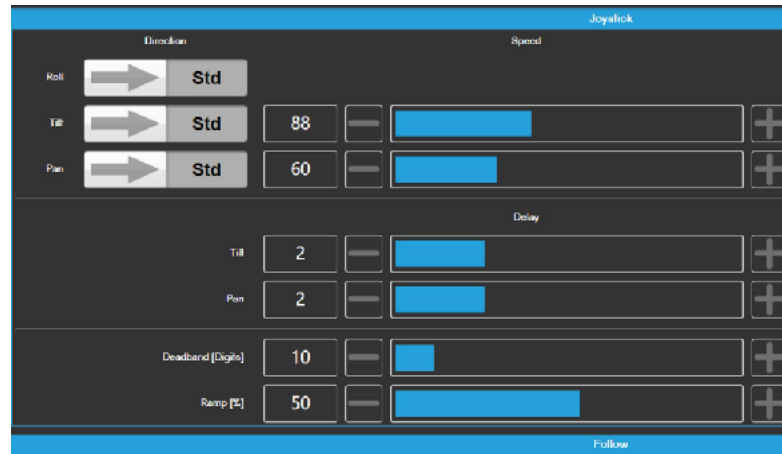
Press **Write to Device** and check if the change will give you the expected improvement and has removed the vibrations.





## 16 Adjusting the Joystick to your personal preferences

To ensure the best control of the MAXIMA and TRINITY and to create your personal style of moving the device, you need to adjust the touch and feel of the the Joystick.

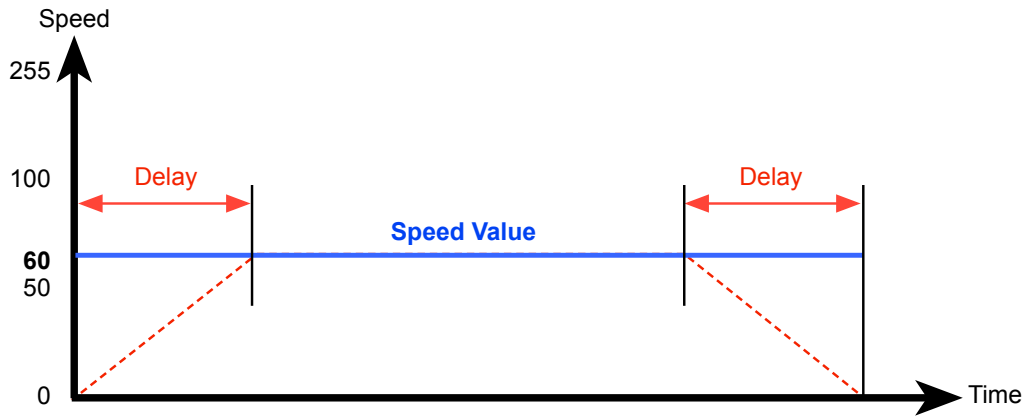


### 16.1 Adjustments and Functions

- **Direction:** Sets the direction in which the pan and tilt axis will go. The pan and tilt direction can also be opposite to the joystick direction.
- **Speed** Sets the speed of the pan and tilt axis.  
**NOTE**  
**The real speed of the pan and tilt axis can be much higher than the speed of the joystick.**  
**NOTE**  
 With the TRINITY you can only access the Tilt speed.
- **Delay** Sets the acceleration and the deceleration of the pan and tilt axis. Or how fast the pan and tilt axis will reach the adjusted speed when the movements starts and how soft the movement will stop.  
**NOTE**  
 A low value will ensure that the head will stop right away, when the joystick movement stops.  
 A higher value will add a smooth movement after the joystick movement had stoped. Higher values will make operating the MAXIMA / TRINITY more and more indirect.
- **Deadband** Sets the starting point of the Joystick. This value controls when the Joystick will react after you touched it. The lower the value, the more direct the joystick will react. The higher the value, the slower the joystick will react.  
**NOTE**  
 If you want to do a running shot with a lot of body movement, you should set the Deadband to a value higher than 5. This ensures that, if you touch the Joystick accidentally that there will be no unwanted movement in the head.
- **Ramp** Sets how much ramp will be on the joystick movement. This value allows you to set a ramp, or how direct the joystick will react. A low value will make the joystick very direct, while a higher value will add a soft ramp to the joystick movement.

## 17 Delay, Deadband, Ramp

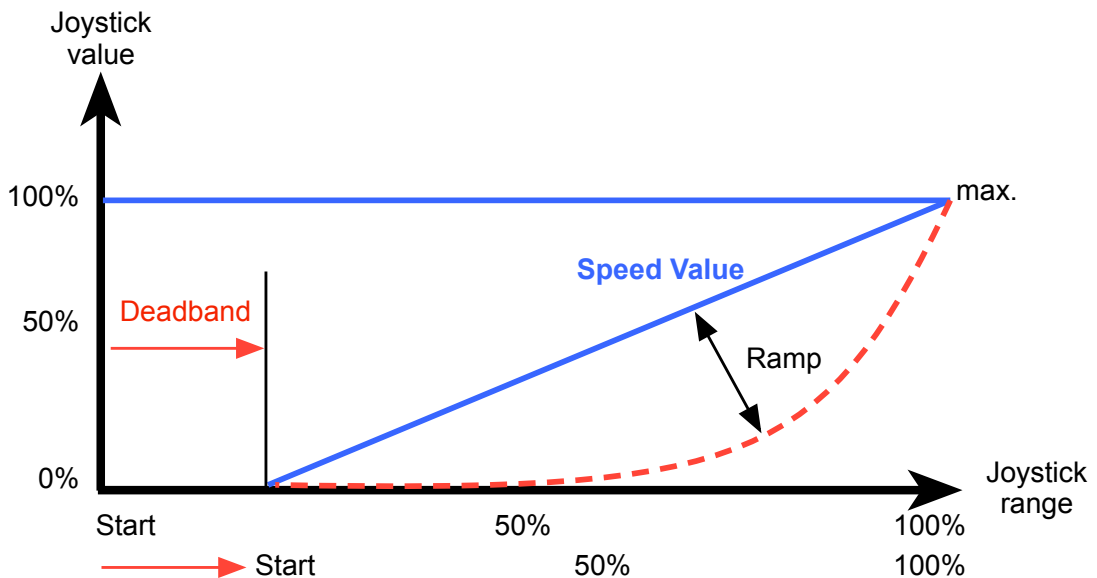
### 17.1 Speed



Sets the acceleration and the deceleration of the pan and tilt axis. Or how fast the pan and tilt axis will reach the adjusted speed when the movements starts and how soft the movement will stop.

### 17.2 Deadband and Ramp

**Deadband** sets the starting point of the Joystick. This value controls when the Joystick will react after you touched it. **Ramp** sets how much ramp will be on the joystick movement.



**NOTICE**

All three parameters are related to each other.

If the speed is adjusted to a value below 50, keep the ramp value as low as possible. If the value is to high, there will be more or less NO movement in the end.

## 18 Defining Endstops

Depending on the size of the camera setup, the frame of the MAXIMA only allows certain amount of camera movement.



### NOTE

Setting end stops will help to avoid the lens or camera colliding with the frame of the MAXIMA or the base plate of the TRINITY.

This adjustment will be performed in the **Device** settings. After clicking on **Device** you will see this tab.

FoMa Control - Standard Mode

Profile **Device** Sensors Settings Help

Info: Hardware: V 03.00  
Core: V 02.00.69  
Control: V 02.17  
Serial nr.: FPF083  
Assembly: 2016.10.19

Connection: COM3 Disconnect

Motors: On

EEPROM: Save to File Load from File Restore Factory Defaults

Device: Read from Device All Profiles Write to Device Save to File Load from File

Joystick

	Offset	Endstop Min [°]			Endstop Max [°]		
Roll	0	0	0	0	0	0	
Tilt	3	-30	-30	30	30	30	
Pan	1	-65	-65	65	65	65	

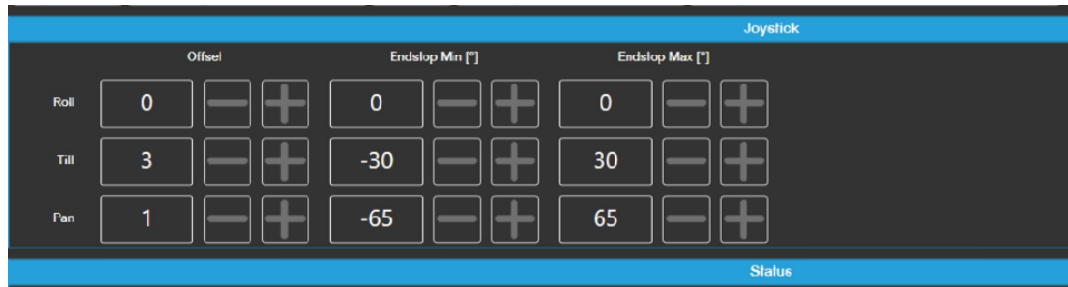
Status

ROLL: 1.54, 1.34, -11.36, 11.36

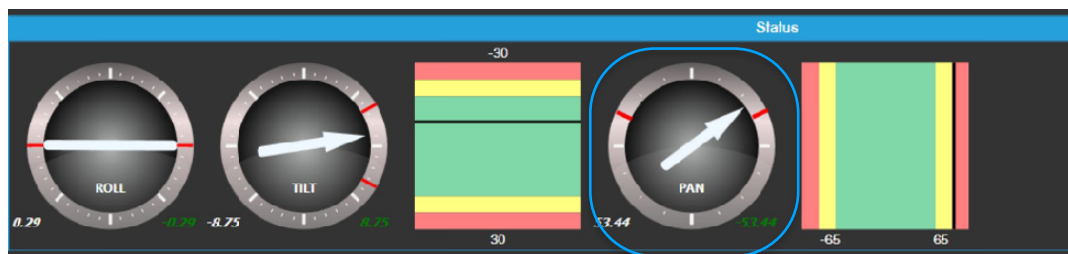
TILT: -30, 30

PAN: 10.83, 10.83, -65, 65

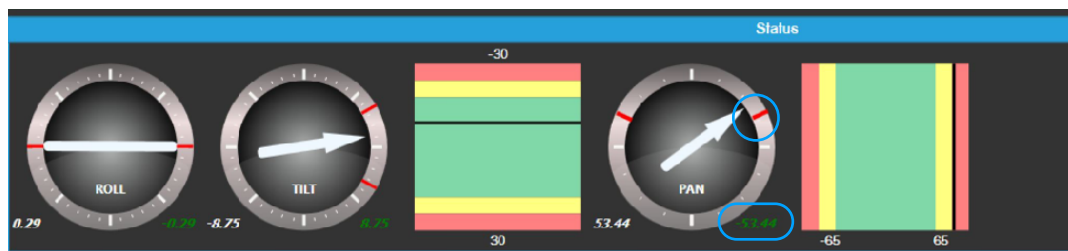
Here you can later dial in the needed values in degrees for the single axes.



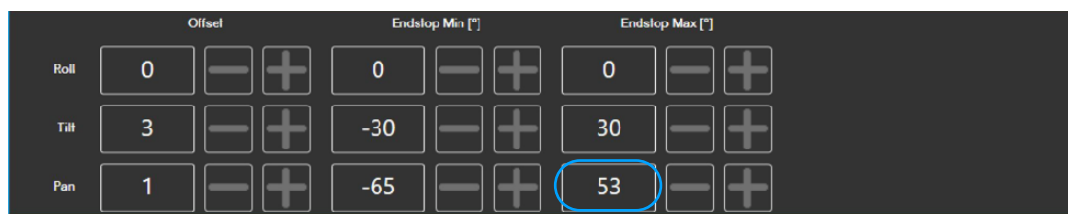
To define the required angle for each axis, use the Joystick and move the camera setup carefully into the required end position.



While moving the camera, you can see the white arrow moving and indicating the value.



To transfer the values, you can use + and - to move the red cursor to the tip of the white arrow.



Or you type in the values, which are shown in lower left and right corners.



## 19 Follow or Fully Stabilized Mode

### 19.1 MAXIMA Modes

Follow Mode	Fully Stabilized Mode
Handheld	Handheld
Easyrig	Remote Controlled
With artemis Vest & Arm	Hard Mounted on Crane or Dolly

### 19.2 TRINITY Modes

Fully Stabilized Mode	Follow Mode
TRINITY moves	Classic Steadicam™ Mode
MSP-1 mounted with Easyrig	
Remote Controlled	MSP-1 mounted with Easyrig
Hard Mounted on Crane or Dolly	

### 19.3 Follow Mode default preset MAXIMA

Preset	Axes	Follow	Speed	Deadband	Ramp%	Description
1	Tilt	On	180	1,0	20	Both axes will follow fast and very directly.
	Pan	On	180			
2	Tilt	Off	180	1,0	20	Only the Pan axis will follow fast and very directly, while the Tilt axis is fully stabilized.
	Pan	On	180			
3	Tilt	On	50	6,0	50	Both axes will follow later and more indirectly.
	Pan	On	50			
4	Tilt	Off	50	6,0	50	Only the Pan axis will follow will follow later and more indirect, while the Tilt axis is fully stabilized.
	Pan	On	50			
5	Tilt	Off	180	5	50	Both axes are fully stabilized. This is the mode you will need for wheels, like the PLC Wheels.
	Pan	Off	180			

#### NOTE

If the camera setup is in the Heavy Payload range, please use user preset 3 and 4 when you need Follow Mode.

### 19.4 Follow Mode default preset TRINITY

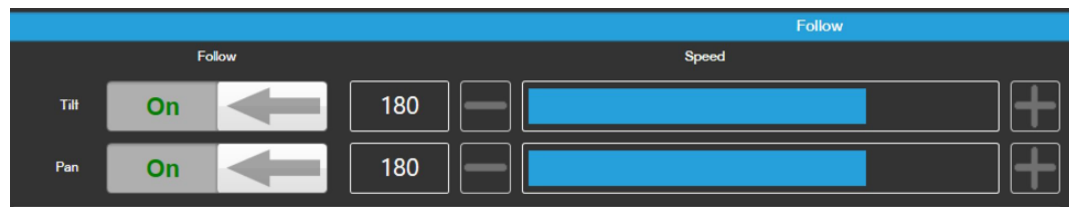
Preset	Axes	Follow	Speed	Deadband	Ramp%	Description
1	Tilt	Off	180	5	30	User preset 1 is the so called TRINITY mode, a fully stabilized mode.
2	Tilt	On	180	0,0	5	User presets 2 and 3 is the classic Steadicam™ mode, but with a stabilized roll axis for a steady horizon.
3	Tilt	On	180	0,0	20	User presets 2 and 3 is the classic Steadicam™ mode, but with a stabilized roll axis for a steady horizon.
4	Tilt	On	0	1,0	50	User preset 4 is TRINITY mode with a locked Roll axis. The roll axis can be Dutched.
5	Tilt	On	180	0,0	50	User preset 5 is a fully locked classic Steadicam™ mode.

#### NOTE

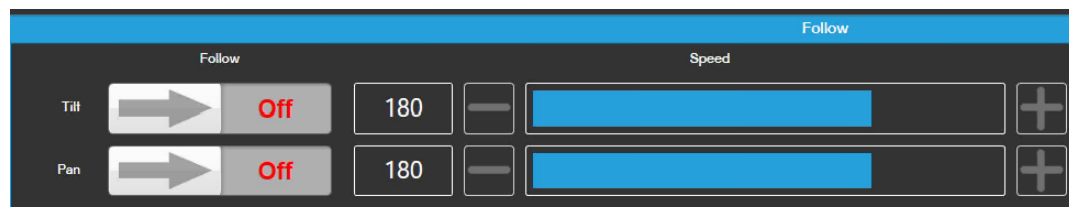
In all modes you can use the wired or wireless Joystick to control and to support the camera movement and the framing.

### 19.5 Changing the Modes

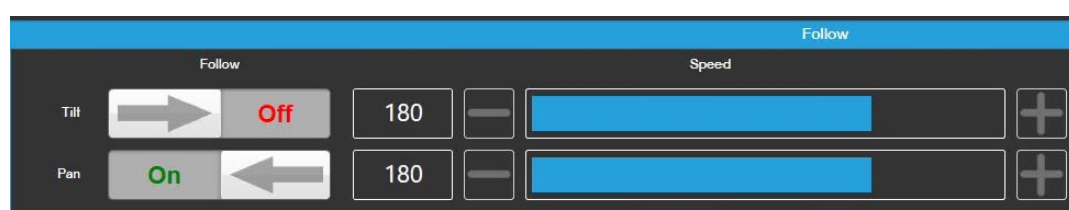
To change from **Follow** to **Fully Stabilized Mode** switch the Follow **On** to **OFF**.



Both axes in Follow Mode



Both axes in Fully Stabilized Mode



Tilt in Fully Stabilized Mode and Pan in Follow Mode

## 19.6 Adjusting the Values

**Speed** Sets the speed how fast the camera will be pulled out of the deadband zone.

**Deadband** Sets the angle of the starting point when the camera will follow the MAXIMA / TRINITY movement.

The lower the value, the faster the camera will follow.  
The higher the value, the later the camera will follow.  
**NOTE**  
If you want to do a running shot with a lot of body movement, you should set the Deadband to a value higher than 5.

**Ramp %** Sets how smooth the camera will be pulled after the camera left the deadband zone.  
A low value, will let the camera engage fast and direct.  
A higher value, will let the camera engage very smooth and indirectly.

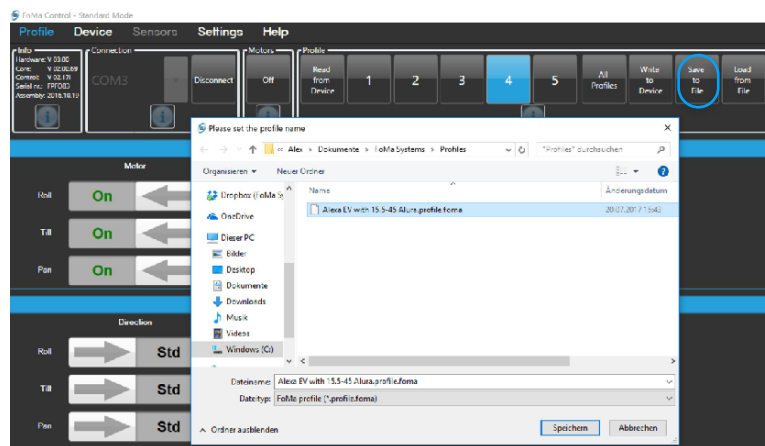
## 19.7 MAXIMA application settings

Applikation	Action	Mode	Speed	Deadband	Ramp
<b>Handheld Direct</b>	Lot of body movement	Follow	180	1,0	20
<b>Handheld Indirect</b>	Lot of body movement	Follow	50	6,0	50
<b>Easyrig Direct</b>	Lot of body movement	Follow	180	1,0	20
<b>Easyrig Indirect</b>	Lot of body movement	Follow	50	6,0	50
<b>artemis arm and vest</b>	Lot of body movement	Follow	50	6,0	50
<b>Black Arm</b>	Hard mounted	Fully Stabilized	180	1,0	10

## 20 Saving and Loading Profiles

### 20.1 Saving Profiles

You should store your settings on the drive, USB stick or into a cloud. Click on **Save to File** and the window below will appear. Name the profile and store it.



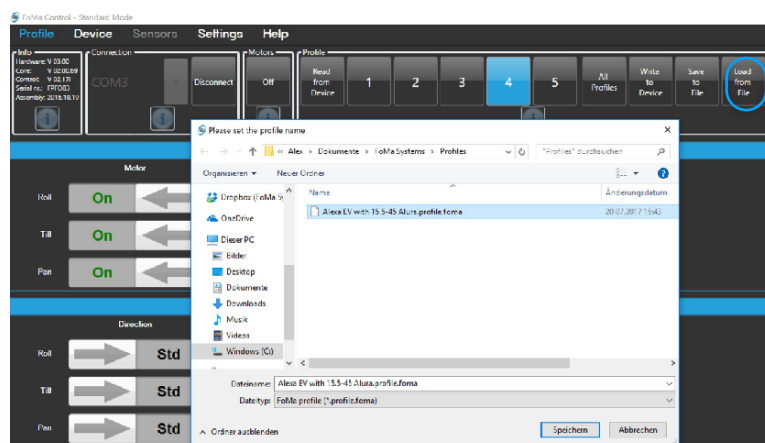
#### NOTE

If you are in one of the five profiles and you press STORE, only the actual profile will be stored.

If you want to store all 5 profiles in one single file, you need to press first ALL PROFILES and then you need press STORE, to save the file.

### 20.2 Load Profiles

You can load any stored profile to any of the 5 profiles of the connected MAXIMA / TRINITY. To load profiles from a drive, USB or a cloud drive, click on **Load from File**. Click on **Load from File** and the window below will appear.



#### NOTE

If you do not own the computer that you are using for these setups, then you should save the profiles onto an USB stick.

#### NOTE

**Make sure that the profiles had been programmed on the same GUI / software version.**



## 21 Troubleshooting

### 21.1 Service Information

For Service and Remote Access we will need to know the firmware version and serial number.

- Press **OK**
- Press **DOWN** until **Info** is displayed
- Press **OK** to confirm
- Now you can see the required information

1. Joystick
2. Remote
3. Calibration
4. Remote Pairing
5. Restore
6. Info
7. Exit

### 21.2 Restore Sensors

If the MAXIMA or TRINITY is hard to control or having troubles holding its position, it will be helpful to reset the sensors.

- Press **OK**
- Press **DOWN** until **Restore** is displayed
- Press **OK** to confirm
- Press **DOWN** until **Sensors** is displayed
- Press **OK** to confirm

1. Joystick
2. Remote
3. Calibration
4. Remote Pairing
5. Restore
6. Info
7. Exit

#### ⚠ CAUTION

**Do not touch or move the MAXIMA or TRINKTY while you restore the Setting! Wait until the TRINITY is back in operation.**

### 21.3 Restore Settings

If you are working with a rental unit, it will make sense to restore the MAXIMA / TRINITY to factory setup. This will ensure that you will not be confronted with any unknown settings.

- Press **OK**
- Press **DOWN** until **Restore** is displayed
- Press **OK** to confirm
- Press **DOWN** until **Setting** is displayed
- Press **OK** to confirm

1. Joystick
2. Remote
3. Calibration
4. Remote Pairing
5. Restore
6. Info
7. Exit

#### ⚠ CAUTION

**Do not touch or move the MAXIMA or TRINKTY while you restore the Setting! Wait until the TRINITY is back in operation.**

### 21.4 Remote Access

The service team can remotely access the MAXIMA or TRINITY. To enable us to access your MAXIMA or TRINITY, you need to install the „TeamViewer“ software on your PC first.

<https://www.teamviewer.com>

Then you need to contact the ARRI service.

#### **NOTE**

You will need a stable internet connection.



**TeamViewer**

## 22 Pan Lock

Using the MAXIMA Pan Lock

### 22.1 Preparing the MAXIMA GUI

#### NOTE

Before you can use the MAXIMA Pan Lock (K2.0014908), you have to switch **OFF** the Pan axis.



### 22.2 Mounting the MAXIMA Pan Lock

- Open both Clamps and place the bracket onto the rods.
- Move the bracket under the outer ring and tighten the clamp screws

#### ⚠ CAUTION

**Before using the Pan Lock, you need to switch OFF the Pan Motors using the GUI!**

**Using the Pan Lock with an active motor will cause over heating and possible failure of the Pan motors.**



## 23 Setting up the PLC wheels

### ⚠ CAUTION

For working with the external PLC wheels, the **MAXIMA** and **TRINITY** need to be specially adjusted.



### NOTE

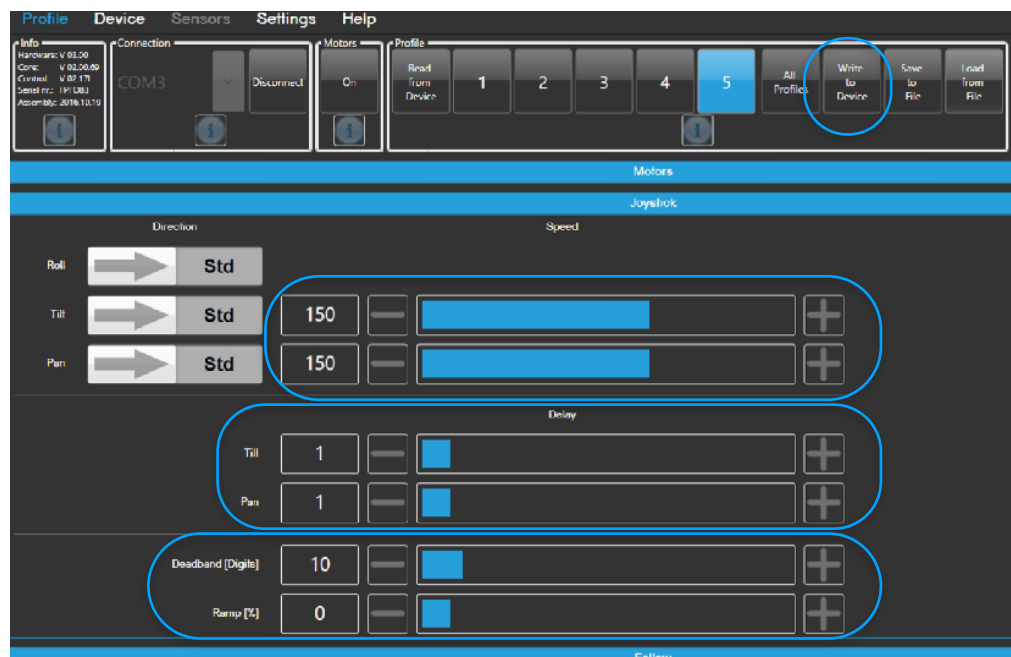
Use **User Preset five** for the wheels setup.

You need to set the Tilt and Pan axis to Fully Stabilized Mode.



### 23.1 Joystick Values

You need to adjust the Joystick values to the settings below.



Needed values

Axis	Speed	Delay	Deadband	Ramp
Tilt	150	1,0		
Pan	150	1,0	10	0 %

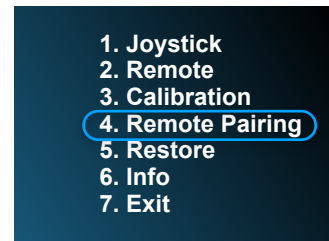
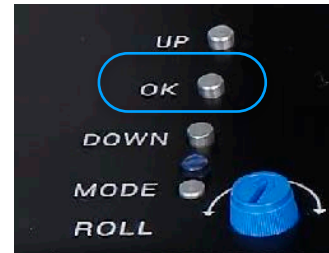
### NOTE

Before you can start using the wheels, you need to read the PLC manual, which can be found here:

[http://shop.plcelectronicsolutions.com/content/Veracity\\_Operation\\_Manual%20Wireless.pdf](http://shop.plcelectronicsolutions.com/content/Veracity_Operation_Manual%20Wireless.pdf)

### 23.2 Pairing the Wheels

- First power **Off** the PLC wheel, by removing the power cable
- Press the **OK** key
- Press **Down** until **Remote Pairing** is displayed
- Press the **OK** key
- Now the MAXIMA / TRINITY will start a 10 sec. count down.
- After **5 sec.** the MAXIMA / TRINITY will **beep**.
- **Plug** the power cable into the PLC wheels.
- Now the PLC will be paired



### 23.3 Using the 3. Wheel for the Roll axis

If you want to control the Roll axis by a third wheel, you need to go first into the **Advance Mode**.  
(Revere to Changing from Standard to Advanced Mode)

For the Roll axis you have to change from **Angle to Speed**.

