



America

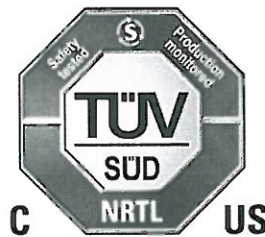
# CERTIFICATE

No. U8 12 02 13563 080

**Holder of Certificate:** Arnold & Richter Cine Technik GmbH & Co Betriebs KG

Pulvermühle  
83071 Stephanskirchen  
GERMANY

**Certification Mark:**



**Product:**

**Spotlight  
Daylight luminaires for professional use**

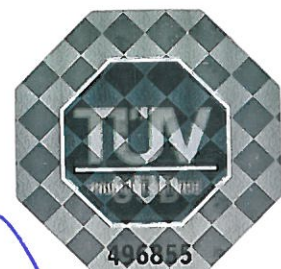
The product was voluntarily tested according to the relevant safety requirements and mentioned properties. It can be marked with the certification mark shown above. The certification mark must not be altered in any way. This product certification system operated by TÜV SÜD America Inc. most closely resembles that described by ISO/IEC Guide 67, Conformity assessment - Fundamentals of product certification, System 3. See also notes overleaf.

**Test report no.:**

028-713001646-000

**Date,** 2012-02-24

Page 1 of 2





America

**CERTIFICATE**

No. U8 12 02 13563 080

**Model(s):** Type: D 5, models: L1.3377x.A  
 Type: D 12; D 12T, models: L1.337xx.A  
 Type: M 18, models: L1.376xx.y  
 Type: AS 18; AS 18 Event, models: L1.375xx.y  
 Type: D 25, models: L1.336xx.A  
 Type: D 40, models: L1.340xx.A  
 Type: D 40/25T, models: L1.350xx.A  
 Where "x" can be any number and describes the color of the housing.  
 Where "y" can be any letter and describes the different versions of design.

**Brand Name:** ARRI

**Parameters:**

Rated voltage:	95V AC (D 5) 100V AC (D 12, D 12T, M 18, AS 18 and AS 18 Event at 1200W) 140V AC (M 18, AS 18 and AS 18 Event at 1800W) 115V AC (D 25 and D 40/25T at 2500W) 200V AC (D 40 and D 40/25T at 4000W)
Rated frequency:	50 - 100 Hz
Rated power:	575W / 7,0A (D 5) 1200W / 13,8A (D 12, D 12T, M 18, AS 18 and AS 18 Event with bulb 1200W) 1800W / 14,6A (M 18, AS 18 and AS 18 Event with bulb 1800W) 2500W / 25,6A (D 25 and D 40/25T with bulb 2500W) 4000W / 24,0A (D 40 and D 40/25T with bulb 4000W)
Protection class:	I
Degree of protection:	IP23

**Tested according to:** UL 1573:2003, 4th edition  
 CAN/CSA C22.2 No. 166-M1983 (R2004)  
 CAN/CSA C22.2 No. 9-M1989 (R2004)

**Production Facility(ies):** 13563