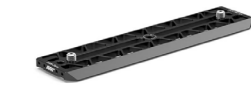


Stabilized Remote Head 360 EVO - Accessories

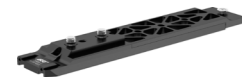


Configuration Overview | 8.3.1 / 2024.01

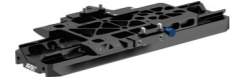
CSS Dovetails



Stabilizer Adapter Mount SAM-Zero, [K2.0041201](#)



Stabilizer Adapter Mount SAM-1 for ALEXA [K2.0018851](#)



Stabilizer Adapter Mount SAM-2 for ALEXA Mini [K2.0014215](#)



Stabilizer Adapter Mount SAM-2 Set for ALEXA Mini [KK.0016116](#)



Stabilizer Adapter Mount SAM-3 for AMIRA [K2.0014630](#)



Stabilizer Adapter Mount SAM-3 Set for AMIRA [KK.0016114](#)



Stabilizer Adapter Mount SAM-4, [K2.0033662](#)



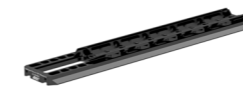
Stabilizer Adapter Mount SAM-6 250mm/10", [K2.0024508](#)



Stabilizer Adapter Mount SAM-6 355mm/14in, [K2.0048425](#)



Stabilizer Adapter Mount SAM-6 450mm/18in, [K2.0039405](#)



Stabilizer Plate for CBP 355mm/14in, [K2.0039803](#)



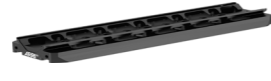
Stabilizer Plate for CBP 450mm/18in, [K2.0038536](#)



Long Stabilizer Mount 15mm Mini/Mini LF, [KK.0038971](#)



Long Stabilizer Mount 19mm Mini/Mini LF, [KK.0038972](#)



Stabilizer Plate for CBP, [K2.0014981](#)



Compact Lens Support CLS-1, [K2.0039089](#)



Stabilizer System Bracket SSB-2 19mm, [K2.0038537](#)



Stabilizer System Bracket SSB-2 15mm, [K2.0038618](#)



CSS Long Steel QL Plate 315mm (SAM plate standard width), [K2.0040041](#)



CSS Extra Long Steel QL Plate 450mm (SAM plate standard width), [K2.0040040](#)



CSS Broadcast Dovetail Plate (SAM plate standard width), [K2.0034512](#)



Dovetail Utility Base DUB-1, [K2.0039861](#)



Dovetail Utility Base DUB-2, [K2.0044813](#)



Balance Utility Dovetail BUD-1, [K2.0034180](#) for ALEXA Mini & Mini LF



Balance Utility Dovetail BUD-2, [K2.0040036](#) for ALEXA 35



CSS Short QL Plate 200mm (SAM plate standard width) [K2.0019295](#)



CSS Long QL Plate 315mm (SAM plate standard width), [K2.0019294](#)



CSS Extra long QL Plate 450mm (SAM plate standard width), [K2.0033425](#)

CSS Brackets



Top Attachment Bracket TAB-1, [K2.0041117](#)



SSB-4, Stabilizer Systems Bracket 4, [K2.0044225](#)



Counterweight Set, 150 g, 300 g, [KK.0033710](#)



SRH Side Accessory Mounting Bracket, [K2.0019296](#)



SRH Side Brackets for Remote Control Panel, [K2.0019289](#)



SRH Tripod Adapter Plate for SRH Remote Control, [K2.0019293](#)



SRH Rod Support Set, [K2.0033426](#)



SRH Top Support Bracket, [K2.0019727](#)



SSB-7, Stabilizer System Bracket 7, DEH-2 Set [KK.0049407](#)
includes:
Stabilizer System Bracket SSB-7 [K2.0048281](#)
Single Support Rod 76mm, 3in, Ø19mm (2x) [K2.0043811](#)
Cartoni Counterweights Rod ø22mm, 2x0,5kg (2x) [K2.0048587](#)

Additional CSS Grip



Vibration Isolator for SRH, Gen. 2, Metric, Basic Set
includes:
Vibration Isolator for SRH, Gen. 2, metric
SRH Mitchell Mount Castle Nut, metric
Wrench for SRH Castle Nut, Mitchell Mount
Case for Vibration Isolator for SRH, Gen 2

[KK.0039359](#)

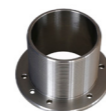
[K2.0038752](#)
[K2.0024106](#)
[K2.0038756](#)
[K2.0038758](#)

Vibration Isolator for SRH, Gen. 2, imperial, Basic Set
includes:

Vibration Isolator for SRH, Gen. 2, imperial
SRH Mitchell Mount Castle Nut, imperial
Wrench for SRH Castle Nut, Mitchell Mount
Case for Vibration Isolator for SRH, Gen 2

[KK.0041936](#)

[K2.0041912](#)
[K2.0041922](#)
[K2.0038756](#)
[K2.0038758](#)



SRH Mitchell Mount Collar, 45mm / 1.77in, [K2.0019297](#)



SRH Mitchell Mount Collar, 40mm / 1.57in, Metric, [K2.0024108](#)



SRH Mitchell Mount Castle Nut, metric, [K2.0024106](#) imperial, [K2.0041922](#)



Mitchell Wedge Lock Set [K2.0049453](#)



SRH Mitchell Mount, Metric [K2.0019298](#)



SRH Modular Low Mount Rack, [K2.0024658](#)

Protection



Rain Cover SRH-3 & SRH-360, [K2.0043054](#)



Case 360 EVO Stabilized Remote Head, [K2.0049726](#)