

Matte Box 20, MB-20 System I & System II (5,65" x 5,65")* * discontinued items only as long as stock is available



CONFIGURATION OVERVIEW – 8.7.0 / 2013.07

ARRI assumes no responsibility with regard to the performance or use of the products or typographical errors or inaccuracies of given information. Product specifications are subject to change without notice. For a full listing of all available components consult the price list.

MB-20 System I - Sets

SET configurations: Many MB-20 assortments are now available in 3-stage versions. The addition of the third stage may however limit wide-angle use. Rear filter ring R2, filter frames F5 and light protection must be ordered separately



MB-20, SET for 15 mm lightweight support (2-Filter Stage), K0.60022.0
Set includes: K2.65027.0, K2.65026.0, K2.65028.0, K2.65032.0, K2.65025.0
MB-20, SET for 15 mm lightweight support (3-Filter Stage), K0.60022.A
Set includes: K2.65027.0, K2.65089.0, K2.65028.0, K2.65032.0, K2.65025.0

MB-20, SET for ARRIFLEX 235 side bracket for 19 mm rods (2-Filter Stage), K0.60023.0

Set includes: K2.65027.0, K2.65026.0, K2.65028.0, K2.65032.0, K2.65024.0

MB-20, SET for ARRIFLEX 235 side bracket for 19 mm rods (3-Filter Stage), K0.60023.A

Set includes: K2.65027.0, K2.65089.0, K2.65028.0, K2.65032.0, K2.65024.0



MB-20, SET for 19 mm Studio Rods, (2-Filter Stage) K0.60024.0
Set includes: K2.65027.0, K2.65026.0, K2.65028.0, K2.65032.0, K2.65025.0, K2.65039.0

MB-20, SET for 19 mm Studio Rods, (3-Filter Stage) K0.60024.A
Set includes: K2.65027.0, K2.65089.0, K2.65028.0, K2.65032.0, K2.65025.0, K2.65039.0



MB-20, SET for 15 mm Studio Rods, (2-Filter Stage) K0.60025.0
Set includes: K2.65027.0, K2.65026.0, K2.65028.0, K2.65032.0, K2.65025.0, K2.65040.0

MB-20, SET for 15 mm Studio Rods, (3-Filter Stage) K0.60025.A
Set includes: K2.65027.0, K2.65089.0, K2.65028.0, K2.65032.0, K2.65025.0, K2.65040.0

MB-20 Set for Clamp On, K0.60026.0
Set includes: K2.65027.0, K2.65026.0, K2.65030.0

Clamp on Rings R7 and filter frames must be ordered separately.



MB-20 System II - Sets

SET configurations: Many MB-20 assortments are now available in 3-stage versions. The addition of the third stage may however limit wide-angle use. Rear filter ring R2, filter frames F5 and light protection must be ordered separately



MB-20-System II SET for LWS, with light shields (2-Stage) K0.60030.0
Set includes: K2.47738.0, K2.65026.0, K2.65028.0, K2.65032.0, K2.65025.0, K2.47740.0, K0.60029.0

MB-20-System II SET for LWS (2-Stage) K0.60040.0

Set includes: K2.47738.0, K2.65026.0, K2.65028.0, K2.65032.0, K2.65025.0

MB-20-System II SET for LWS (3-Stage) K0.60040.A

Set includes: K2.47738.0, K2.65089.0, K2.65028.0, K2.65032.0, K2.65025.0



MB-20-System II SET for 19mm Studio Rods, K0.60044.0
Set includes: K2.47738.0, K2.65026.0, K2.65028.0, K2.65032.0, K2.65025.0, K2.66039.0

MB-20-System II SET for 15mm Studio Rods, K0.60045.0
Set includes: K2.47738.0, K2.65026.0, K2.65028.0, K2.65032.0, K2.65025.0, K2.66040.0

MB-20-System II SET for ARRIFLEX 235 side bracket for 19 mm rods (2-Stage) K0.60043.0

Set includes: K2.47738.0, K2.65026.0, K2.65028.0, K2.685032.0, K2.65024.0

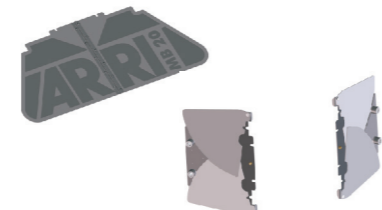
no picture

no picture

MB-20 System II Set for Clamp On, K0.60046.0
Set includes: K2.47738.0, K2.65026.0, K2.65030.0

Clamp on Rings R7 and filter frames must be ordered separately.

Light Protection System II



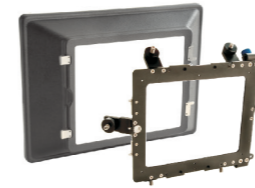
Top or Bottom flag
K2.47740.0
Side flag (pair)
K0.60029.0

Light Protection System I

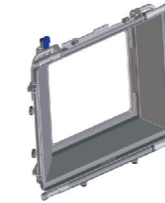


Top or Bottom flag
K2.66019.0
Side flag (pair)
K2.65056.0

Basic Modules & Accessories



MB-20 basic module System I with sun shade
K2.65027.0



MB-20 basic module System II with sun shade
K2.47738.0



Hard Matte Sets
2/3" Video Format 4:3
K2.47689.0
2/3" Video Format 16:9
K2.47690.0
35 mm Film
K2.47691.0



2-filter stage
K2.65026.0 F5 Filter
3-filter stage
K2.65089.0 F5 Filter
(K2.65028.0 needed)



2-filter stage
K2.65158.0
3-filter stage
K2.65157.0
(for direct use with R1 Rings - for R1 Ring details see Config 8.0.0)



Back 138 mm bellows adapter, K2.65028.0
(for use with R2 Rings - for R2 Ring details see Config 8.0.0)



Clamp-On Adapter
K2.65030.0
(instead of swing away module) fits R7 Rings ø 130 mm see Config 8.0.0



Swing away module
K2.65032.0



Console for lightweight support
K2.65025.0
(requires swingaway module)



Console for 235 side bracket
K2.65024.0
Rod Reduction to 15 mm, K2.47062.0



Studio Console for 19 mm Rods, K2.55031.0
Studio Console for 15 mm Rods, K2.55032.0.
Note: Use Studio Consoles if lens front diameter exceeds 157 mm. Not compatible with lightweight support.



Case for MB-18 / 20
K2.49050.0
with variable dividers



Adapter for 19 mm Rods, K2.66039.0
Adapter for 15 mm Rods, K2.66040.0

F5 Filter frames

4" x 6" Filter frame, vertical
K2.66023.0

4" x 5,65" Filter frame, horizontal
K2.65048.0

4" x 5,65" Filter frame, vertical
K2.65049.0

5" x 6" Filter frame, vertical
K2.66024.0

Filter frame combo
4" x 5,65" / 5 x 5, K2.65023.0

5,65" x 5,65" / 5 x 6, K2.65022.0

4" x 5,65" / 4 x 4, K2.65095.0
5,65" x 5,65" / 4 x 5,65" K2.65148.0

for R1, R2 & R7 Ring details see Config 9.0.0.