



WVS Software Update Package 4.3.26

For WVT-1, WVR-1 and HD video transmitter in ALEXA LF and ALEXA SXT W

RELEASE NOTES

August 27, 2018

Table of Contents

A. Introduction	3
Overview of Changes with SUP 4.3.26	3
Update Information	3
Downgrading	4
B. Known Issues	4
C. Updating Instructions	4
Download and Registration Process	4
Update Procedure	4

A. Introduction

We hereby announce that WVS Software Update Package (SUP) 4.3.26 is now shipping with all ARRI Wireless Video System components: integrated HD video transmitters inside ALEXA LF and ALEXA SXT W cameras, Wireless Video Transmitter WVT-1 and Wireless Video Receiver WVR-1.

Overview of Changes with SUP 4.3.26

• Improvement of reliability and signal robustness

WVS SUP 4.3.26 improves the reliability and signal robustness of the integrated wireless video transmitters within ALEXA LF and ALEXA SXT W cameras. Due to a faulty calibration, these transmitters were not able to supply full transmission power to the antennas with software before WVS SUP 4.3.26. The stand-alone Wireless Video Transmitter WVT-1 and the Wireless Video Receiver WVR-1 are not affected by this.

• Correct VPID within SDI Signal

The SDI OUT 1/2 of the Wireless Video Receiver WVR-1 now include the correct VPID (Video Payload Identifier). This allows using the output of WVR-1 with a variety of monitors and converters with automatic signal detection. To benefit from this bug fix, the WVR-1 needs WVS SUP 4.3.26 installed.

Update Information

Cameras and electronic devices should always run the latest SUP so you can benefit from the latest improvements, features and bug fixes.

All Wireless Video System devices are shipping with WVS SUP 4.3.26 installed from August 27th on.

Since the pairing between devices will be deleted when a new WVS SUP is installed, it is necessary to pair transmitter and receivers again after installation.

WVS SUP 4.3.26 is backwards compatible with “Update-Starlite-ARRI-WVS-Build-05-0308” of Transvideo Starlite ARRI-WVS devices. The software for Transvideo Starlite ARRI-WVS devices is available at <https://www.transvideo.eu/software-updates>.

The WVS SUP 4.3.23 remains compatible with the new WVS SUP 4.3.26. However, since WVS SUP 4.3.26 also contains a bug fix, we recommend updating all units to WVS SUP 4.3.26.

WVS SUP 4.3.26 is not compatible with versions of the WVS software older than 4.3.23. Please be aware that devices with older software versions than WVS SUP 4.3.23 will not pair, hence please ensure that all devices are running compatible software.

<u>WVS SUP compatibility</u>		Installed on integrated transmitters or WVT-1			
		SUP 4.3.17	SUP 4.3.19	SUP 4.3.23	SUP 4.3.26
Installed on WVR-1	SUP 4.3.17	✓	✗	✗	✗
	SUP 4.3.19	✗	✓	✗	✗
	SUP 4.3.23	✗	✗	✓	✓ (1)
	SUP 4.3.26	✗	✗	✓ (2)	✓ (3)

(1) Improved reliability and signal robustness with integrated transmitters, no VPID functionality

(2) No improved reliability and signal robustness with integrated transmitters, VPID functionality

(3) Improved reliability and signal robustness with integrated transmitters, VPID functionality

Downgrading

As this software includes important adjustments and improvements, customers should always use the most recent Software Update Package.

B. Known Issues

- **Wireless video transmission image artifact**

On rare occasions will the red and blue colors be reversed for the wireless video.

- **Wireless video artifacts when peaking is on**

On rare occasions an image artifact can occur when using wireless video with peaking on.

- **Wireless video image drifts after sensor mode change**

When using the integrated wireless video transmitter or WVT-1 and changing the sensor mode of the ALEXA LF and ALEXA SXT W, it is possible that the MON OUT of the WVR-1 could lose sync and drift horizontally across the screen. In this case, turning the integrated video transmitter or WVT-1 off and on again should fix the problem.

C. Updating Instructions

Download and Registration Process

You can find the WVS Software Update Package (SUP) and the ARRI Wireless Tool as one zip file in the ALEXA DOWNLOADS Section on the ARRI website.

<http://www.arri.com/camera/alex/downloads/>

Update Procedure

Tools needed

- TX5 torx screwdriver
- TX6 torx screwdriver
- USB Cable WVS (K2.0014216)
- Windows computer with ARRI Wireless Tool software installed
- WVS device with power supply

Updating the device

WVT-1 and WVR-1: Unscrew the two TX5 screws on the bottom of the WVS device to remove the USB cover of the WVS device.

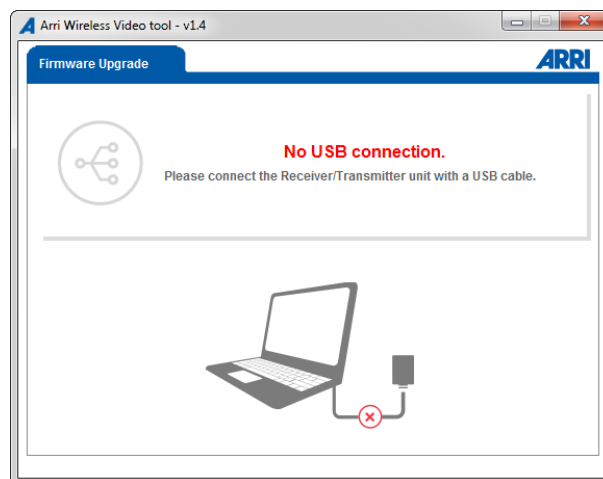
ALEXA LF/SXT W: Unscrew the two TX6 screws on the bottom of the integrated HD video transmitter at the back of the camera to remove the USB cover.

Connect the device to the computer's USB port using the USB Cable WVS (K2.0014216).

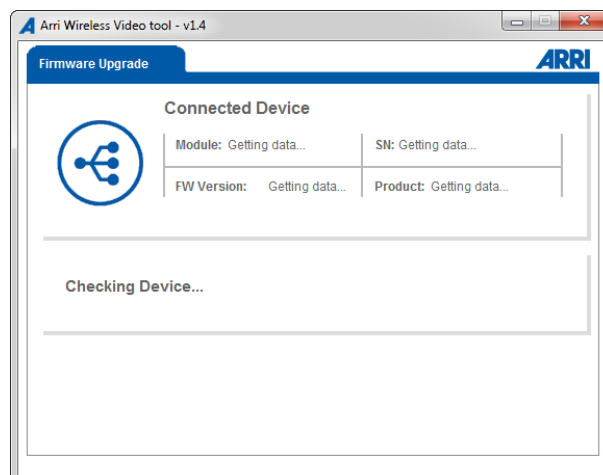
Start the ARRI Wireless Tool software.



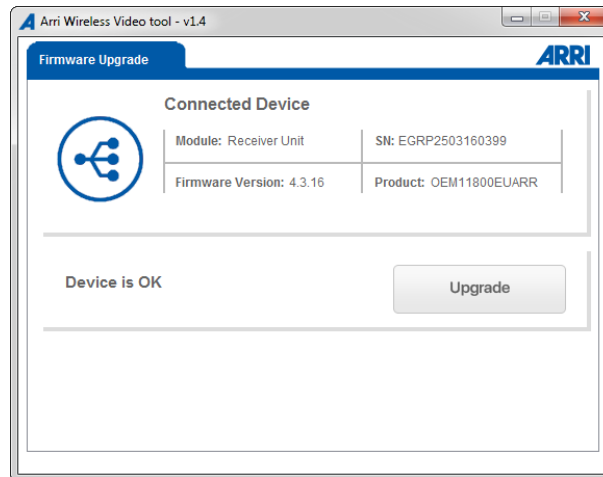
- Until the WVS device is powered, the ARRI Wireless Tool will prompt that no USB connection is available.



- Power the WVS device using a power supply.
The ARRI Wireless Tool will check for the device and read out its data.

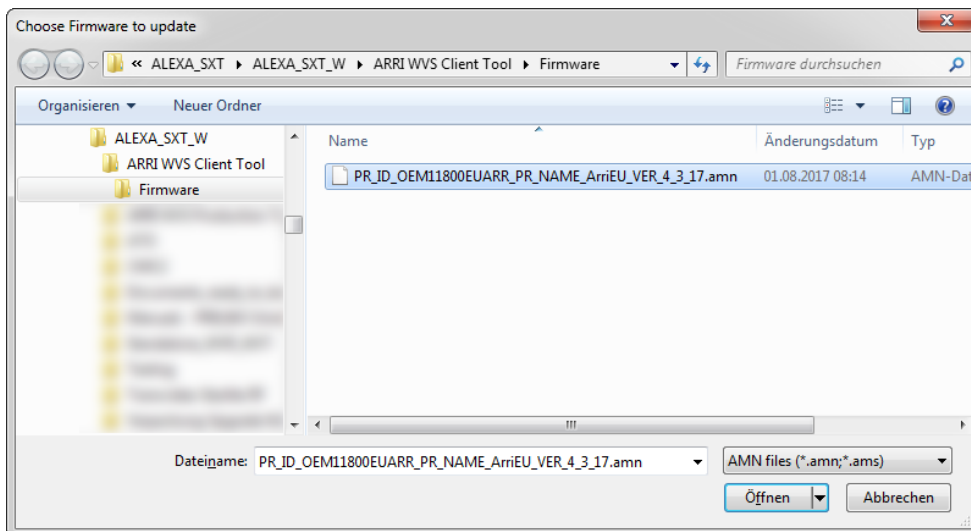


- Once connected, the WVS device data is displayed.

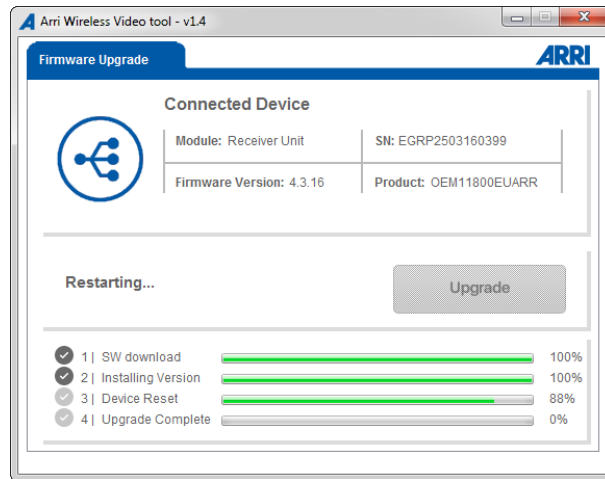


Module: Receiver Unit or Transmitter Unit
 SN: Device serial number
 Firmware Version: Currently installed Firmware Version
 Product: Device product code, includes wireless region identifier

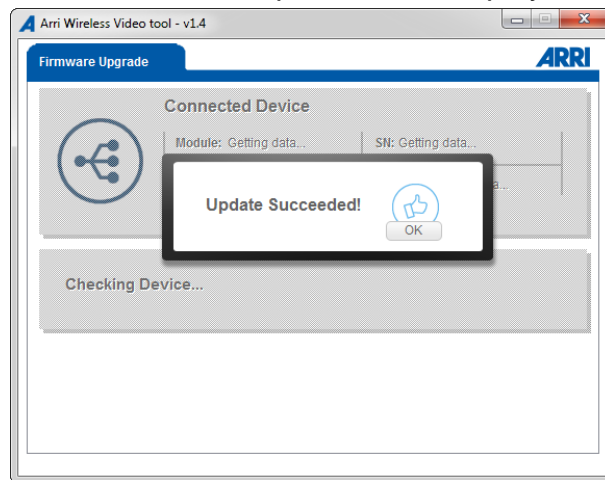
- To upgrade to another firmware version, click the Upgrade button
 In the file system explorer window navigate to the folder containing the firmware update files.
 Make sure to choose the file which includes the same product code in its name as your device (e.g.: OEM11800EUARR). Please always use the latest firmware on all your devices.



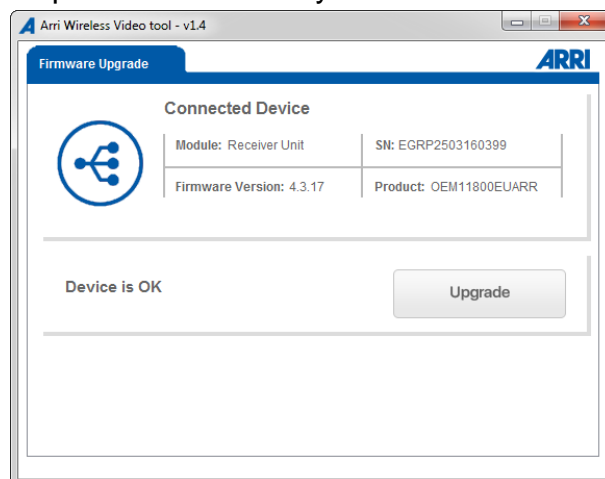
- Upon confirmation, the upgrade process will start immediately. Please make sure that the device is sufficiently powered and do not to shut it down during the update.



- The upgrade process may take up to five minutes. The device will restart automatically. Once the update is finished, a pop-up will be displayed.
- Click OK to confirm. The device data is updated and displayed.

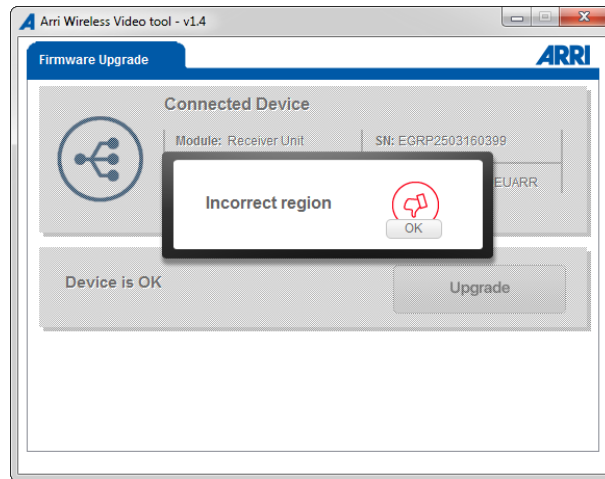


- The firmware has been updated successfully.



Troubleshooting:

In case the updater states “Incorrect region” please verify that the product code of the firmware update file is correct.



It is not possible to program a firmware with a different region setting. If you need to have the region setting of your device changed, e.g. to match a device with a different product code, please contact your nearest ARRI Service Subsidiary.

https://www.arri.com/support/technical_service/camera_systems/