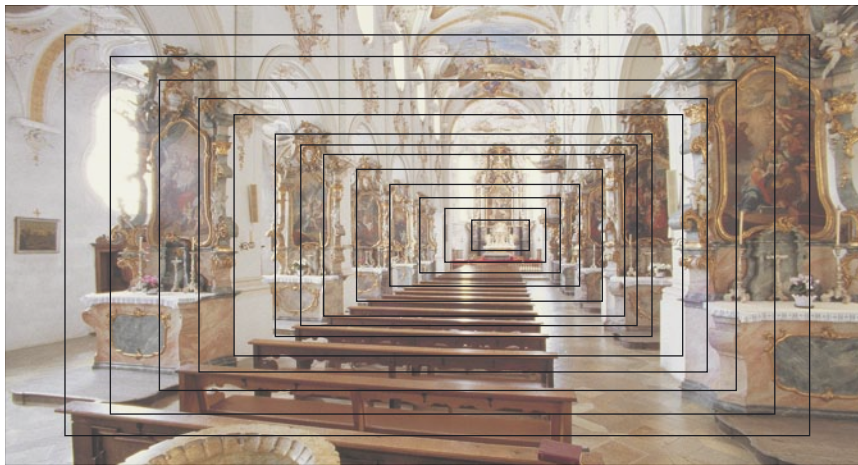


CARL ZEISS ULTRA PRIME LENSES

ARRI ARRI

ZEISS



COVER ALL THE ANGLES



CARL ZEISS ULTRA PRIME LENSES

COVER ALL THE ANGLES

More focal lengths in a Super Color Matched lens set.

Take a step back and get the big picture through the brilliant, distortion free Ultra Prime 10 mm, or dive right into the action with the only telephoto lens designed specifically for motion pictures, the Ultra Prime 180 mm. The Ultra Prime lenses offer 15 different focal lengths for every cinematic need, giving you the flexibility to get the coverage you want.

Save time in post. All 15 lenses are Super Color Matched to guarantee seamless cuts between scenes, avoiding time consuming color matching in post.

Come closer: The Ultra Prime lenses retain their excellent image quality even at close focus across the whole Super 35 frame. For directors who like to get in close to the action this is invaluable.

Ultra Prime lenses deliver top quality images in all situations with typical ARRI reliability. Cinematographers rely on them under the most adverse environmental conditions, and rental houses appreciate their unparalleled service record.

The Church

In 1161 the Benedictine prior Volkmar laid the cornerstone for a new abbey church in a rural location southeast of Noerdlingen, a small town in western Bavaria. In 1192, after 31 years of construction, the church named St. Martin was inaugurated. Originally a sacral building in Romanic style with rounded windows and doors, St. Martin changed to baroque style during the expansion and refurbishing in the years 1693 to 1702. It was then further developed and lavishly decorated during the 18th century, resulting in its current appearance.

The Shoot

The images in this booklet were all taken with the 15 original Ultra Prime lenses by Manfred Stich, Hans Uwe Furthwängler and Kornelius Müller of Zeiss. St. Martin was chosen as the subject because it could fill any image angle from ultra wide to long telephoto with rich and meaningful detail.



ARRI 

ULTRA PRIME T2.1/10 mm



ZEISS



ARRI 

ULTRA PRIME T2/12 mm



ZEISS



ARRI 

ULTRA PRIME T1.9/14 mm



ZEISS



ARRI 

ULTRA PRIME T1.9/16 mm



ZEISS



ARRI 

ULTRA PRIME T1.9/20 mm



ZEISS



ARRI 

ULTRA PRIME T1.9/24 mm



ZEISS



ARRI 

ULTRA PRIME T1.9/28 mm



ZEISS



ARRI 

ULTRA PRIME T1.9/32 mm



ZEISS



ARRI 

ULTRA PRIME T1.9/40 mm



ZEISS



ARRI 

ULTRA PRIME T1.9/50 mm



ZEISS



ARRI 

ULTRA PRIME T1.9/65 mm



ZEISS



ARRI 

ULTRA PRIME T1.9/85 mm



ZEISS



ARRI 

ULTRA PRIME T1.9/100 mm



ZEISS



ARRI 

ULTRA PRIME T1.9/135 mm



ZEISS



ARRI 

ULTRA PRIME T1.9/180 mm



ZEISS

Lens	T-stop	Close focus	Length	Front diameter	Weight	Horizontal angle of view (18 x 24)	Horizontal angle of view (16 x 22)
ULTRA PRIME T2.1/10 mm	T2.1 to T22	0.35m / 1 1/4'	143mm / 5.6"	156mm / 6.1"	2.9kg / 6.4lbs	100.2°	90.8°
ULTRA PRIME T2/12 mm	T2 to T22	0.3m / 1'	140mm / 5.5"	156mm / 6.1"	2.0kg / 4.4lbs	90.2°	85.2°
ULTRA PRIME T1.9/14 mm	T1.9 to T22	0.22m / 3/4'	112mm / 4.4"	114mm / 4.5"	1.8kg / 4.0 lbs	80.6°	75.6°
ULTRA PRIME T1.9/16 mm	T1.9 to T22	0.25m / 1'	94mm / 3.7"	95mm / 3.7"	1.2kg / 2.6lbs	75.6°	70.8°
ULTRA PRIME T1.9/20 mm	T1.9 to T22	0.28m / 1'	91mm / 3.6"	95mm / 3.7"	1.2kg / 2.6lbs	62.8°	58.4°
ULTRA PRIME T1.9/24 mm	T1.9 to T22	0.3m / 1'	91mm / 3.6"	95mm / 3.7"	1.0kg / 2.2lbs	54.2°	50.2°
ULTRA PRIME T1.9/28 mm	T1.9 to T22	0.28m / 1'	91mm / 3.6"	95mm / 3.7"	1.1kg / 2.4lbs	46.8°	43.2°
ULTRA PRIME T1.9/32 mm	T1.9 to T22	0.35m / 1 1/4'	91mm / 3.6"	95mm / 3.7"	1.1kg / 2.4lbs	41.6°	38.2°
ULTRA PRIME T1.9/40 mm	T1.9 to T22	0.38m / 1 1/4'	91mm / 3.6"	95mm / 3.7"	1.1kg / 2.4lbs	33.2°	30.6°
ULTRA PRIME T1.9/50 mm	T1.9 to T22	0.6m / 2'	91mm / 3.6"	95mm / 3.7"	0.9kg / 2.2lbs	26.2°	24.0°
ULTRA PRIME T1.9/65 mm	T1.9 to T22	0.65m / 2 1/4'	91mm / 3.6"	95mm / 3.7"	1.1kg / 2.4 lbs	21.0°	19.2°
ULTRA PRIME T1.9/85 mm	T1.9 to T22	0.9m / 3'	91mm / 3.6"	95mm / 3.7"	1.2kg / 2.6lbs	16.5°	15.2°
ULTRA PRIME T1.9/100 mm	T1.9 to T22	1m / 3 1/4'	91mm / 3.6"	95mm / 3.7"	1.2kg / 2.6lbs	13.7°	12.6°
ULTRA PRIME T1.9/135 mm	T1.9 to T22	1.5m / 5'	119mm / 4.7"	95mm / 3.7"	1.6kg / 3.5lbs	10.2°	9.3°
ULTRA PRIME T1.9/180 mm	T1.9 to T22	2.6m / 8 1/2'	166mm / 6.5"	114mm / 4.5"	2.5kg / 5.5lbs	7.6°	7.0°

This Ultra Prime Booklet (Ident. No. K5.58517.0) is published by:
Arnold & Richter Cine Technik, September 01, 2004
Camera Marketing, msmueller@arri.com

Technical Data are subject to change without notice | © ARRI/2004

ARRI  ARNOLD & RICHTER CINETECHNIK

TÜRKENSTRASSE 89 / D-80799 MUNICH
PHONE +49 (0) 89 3809 0 / FAX +49 (0) 89 3809 1244
www.arri.com